

## Plan Limitations

Our Dental Membership Plans are **NOT** insurance and cannot be used in conjunction with conventional dental insurance or other benefits.

Membership fees must be paid in full before membership benefits may be used.

Membership is for services normally covered in the scope of General Dentistry. Referrals to Specialists are not covered in treatments.

Periodontal Scaling, Perio Maintenance procedures, and Root Planing are not the same as healthy mouth cleanings. They are provided at reduced rates and are not free with membership.



### UCF Student Health Services Dental Center

4098 Libra Drive  
Room 210C  
Orlando, FL 32816

Phone: 407-823-1635  
Fax: 407-823-5140

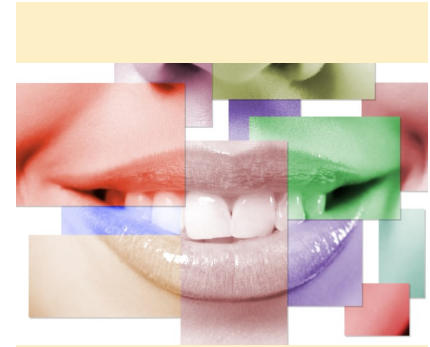
[StudentHealth.ucf.edu/services/dental](http://StudentHealth.ucf.edu/services/dental)



Student Health  
Services

# SHS Dental

## Membership Plan



## What is a Dental Membership Program?

Dental Membership Programs are direct primary care agreements between an individual and a dental practice. You can think of them as **discount** or **savings** plans—they help reduce overall dental costs for members and are a viable option to conventional dental insurance.

Members pay an annual fee to receive regular exams, regular cleanings, and x-rays.

- ◆ **No Premiums**
- ◆ **No Yearly Maximums**
- ◆ **No Deductibles**
- ◆ **No Claim Forms**
- ◆ **No Waiting Periods or Frequencies**
- ◆ **No Pre-authorization**
- ◆ **No Limitations on Pre-Existing Conditions**
- ◆ **No Denied Coverage**



UCF Student Health Services' in-house dental facility

All other services are provided at the UCF Student discounted rate.

## Annual Cost of Membership

**\$300**

For UCF students

**\$400**

For eligible non-students

Membership fees are eligible for a full refund within **30 days** as long as benefits have not been used.

### Did You Know?

The ADA Center for Professional Success reports that patients with a benefit plan are much more likely to seek dental care and accept treatment plans.

Source: [Success.ADA.org](http://Success.ADA.org)

## Excellent Care

at an Affordable Price

The SHS Dental Membership Plan covers...

*Two (2) exams annually*

*One (1) Limited/Urgent Care/Emergency problem-focused exam*

*Necessary X-Rays within scope of care (Panoramic, FMX, or Bite Wings)*

*Two (2) adult healthy mouth cleanings (Adult Prophylaxis or Full Mouth Debridement)*

*Fluoride treatment at each Adult Prophylaxis appointment*

*Complimentary manual toothbrush, toothpaste, and floss at each hygiene visit*

*Access to SHS Smoking Cessation classes*

